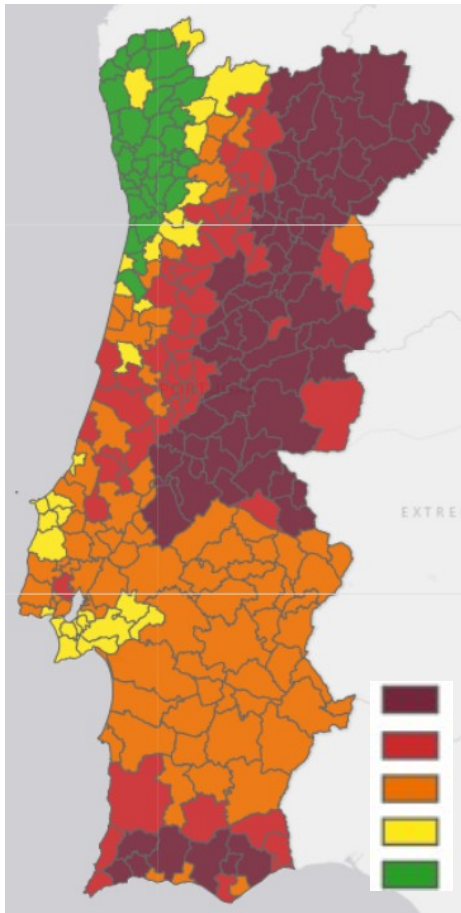


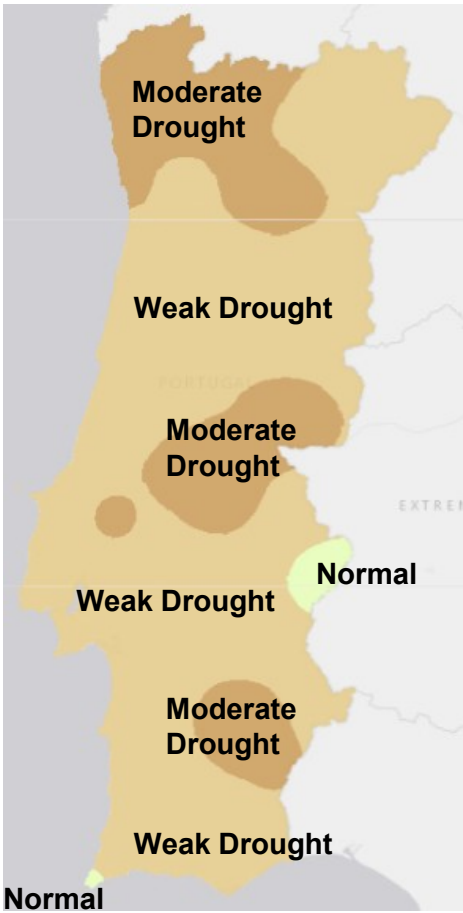
**MTG True Colour RGB + MSLP**  
**21<sup>st</sup> September 2025 15:00UTC**  
[resources.eumetrain.org/ePort\\_MapViewerEWC\\_MTG/index.html](https://resources.eumetrain.org/ePort_MapViewerEWC_MTG/index.html)

Rural Fire Danger - 21<sup>st</sup> Sep 2025  
IPMA

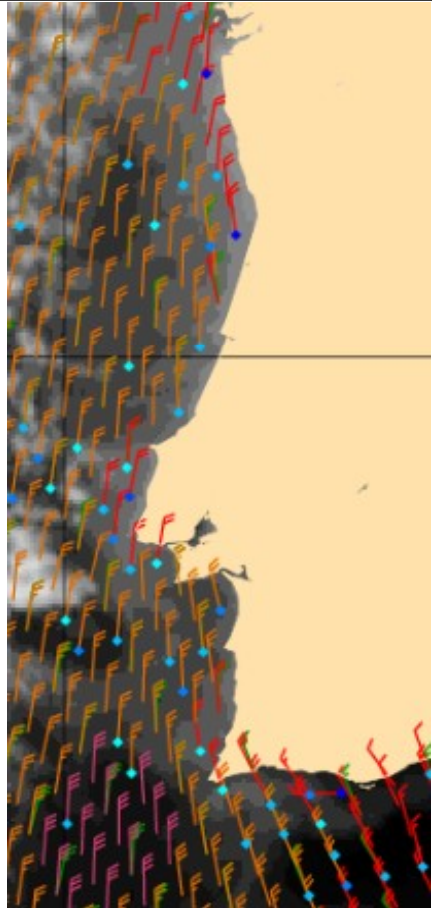


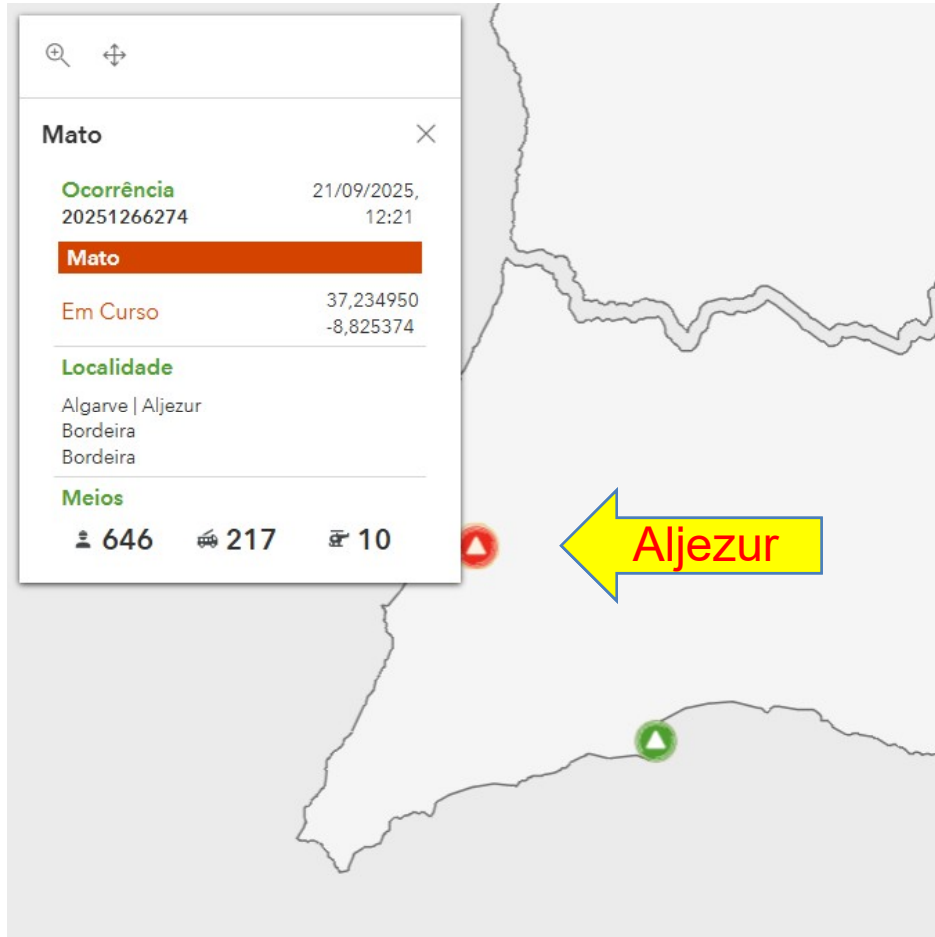
	Maximum
	Very High
	High
	Moderate
	Reduced

Drought PDSI – August 2025  
IPMA

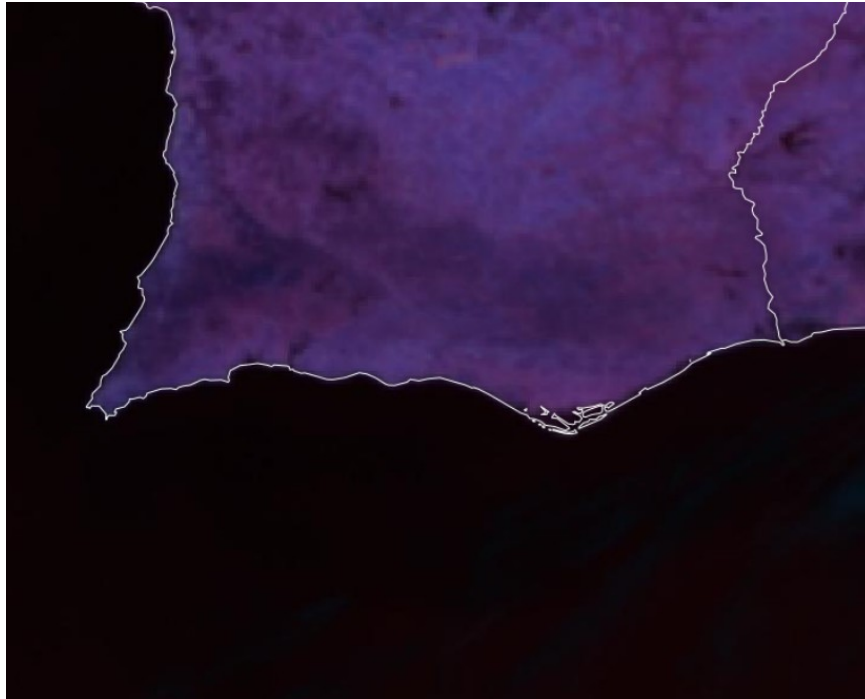


ASCAT-B - 21<sup>st</sup> Sep 2025  
20:30UTC  
scatterometer.knmi.nl





Fire detection at 12:21h local  
time (11:21UTC) on the 21<sup>st</sup> of  
September 2025  
[prociv-portal.geomai.mai.gov.pt](http://prociv-portal.geomai.mai.gov.pt)



RGB Fire Temperature  
(**MTG-I1** satellite with FCI sensor)

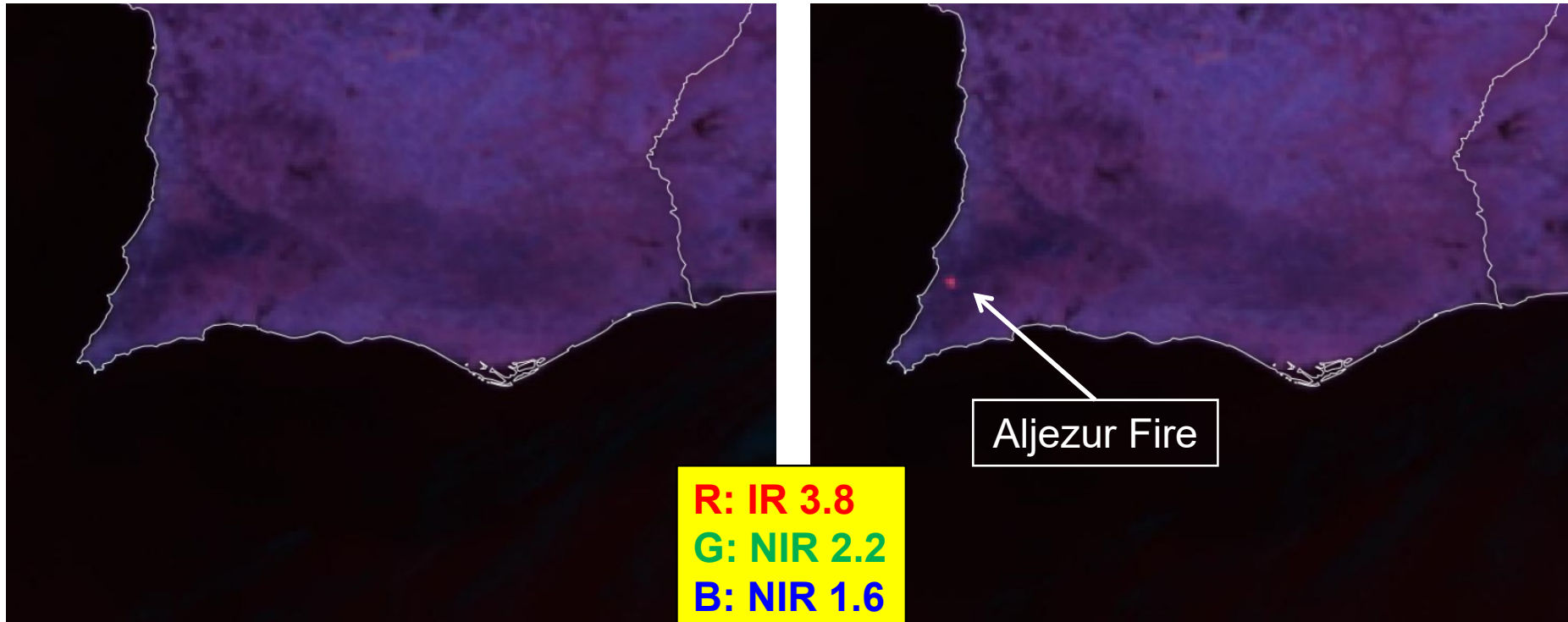
Red Channel: IR 3.8

Green Channel: NIR 2.2 (new)

Blue Channel: NIR 1.6

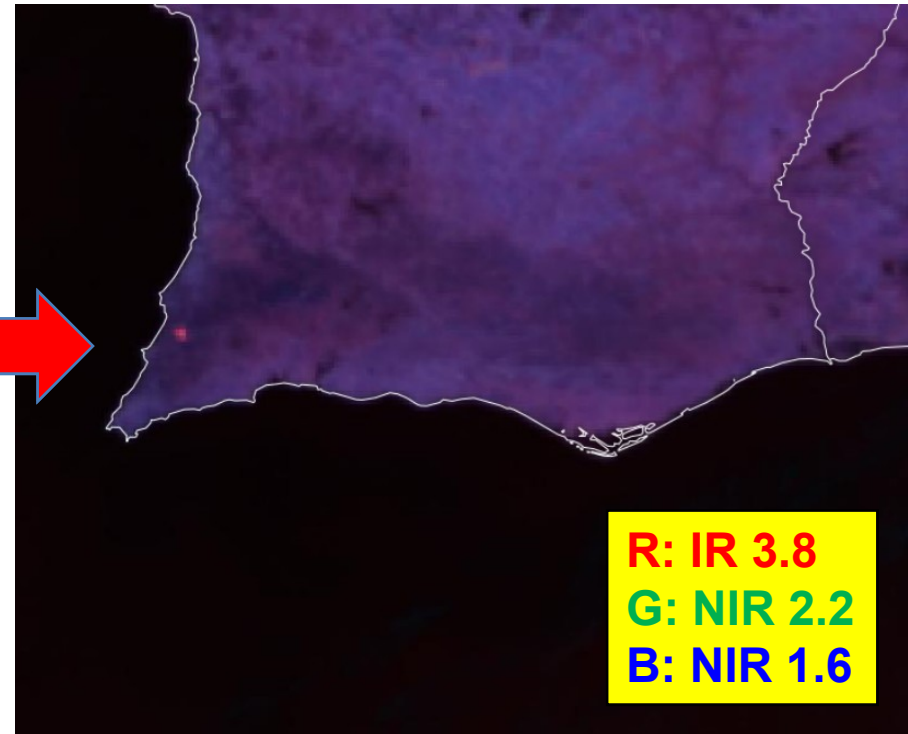
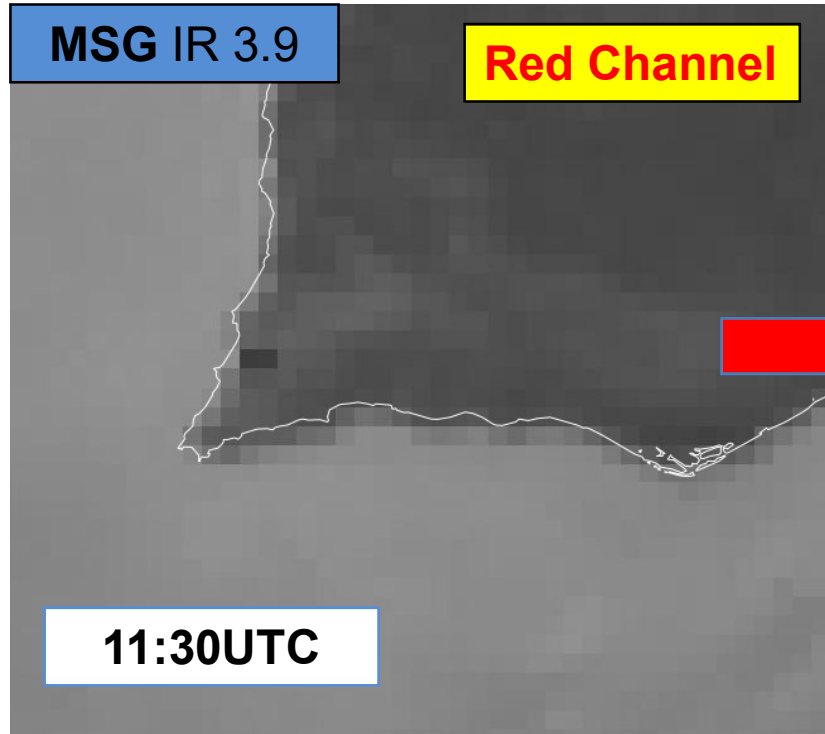
- **10 min** temporal resolution (2.5 min in the near future with MTG-I2)
- 0.5 to 2 km spatial resolution at nadir
- improved spectral resolution

**MTG** Fire Temperature RGB  
21<sup>st</sup> September 2025  
11:10UTC  
[view.eumetsat.int](http://view.eumetsat.int)



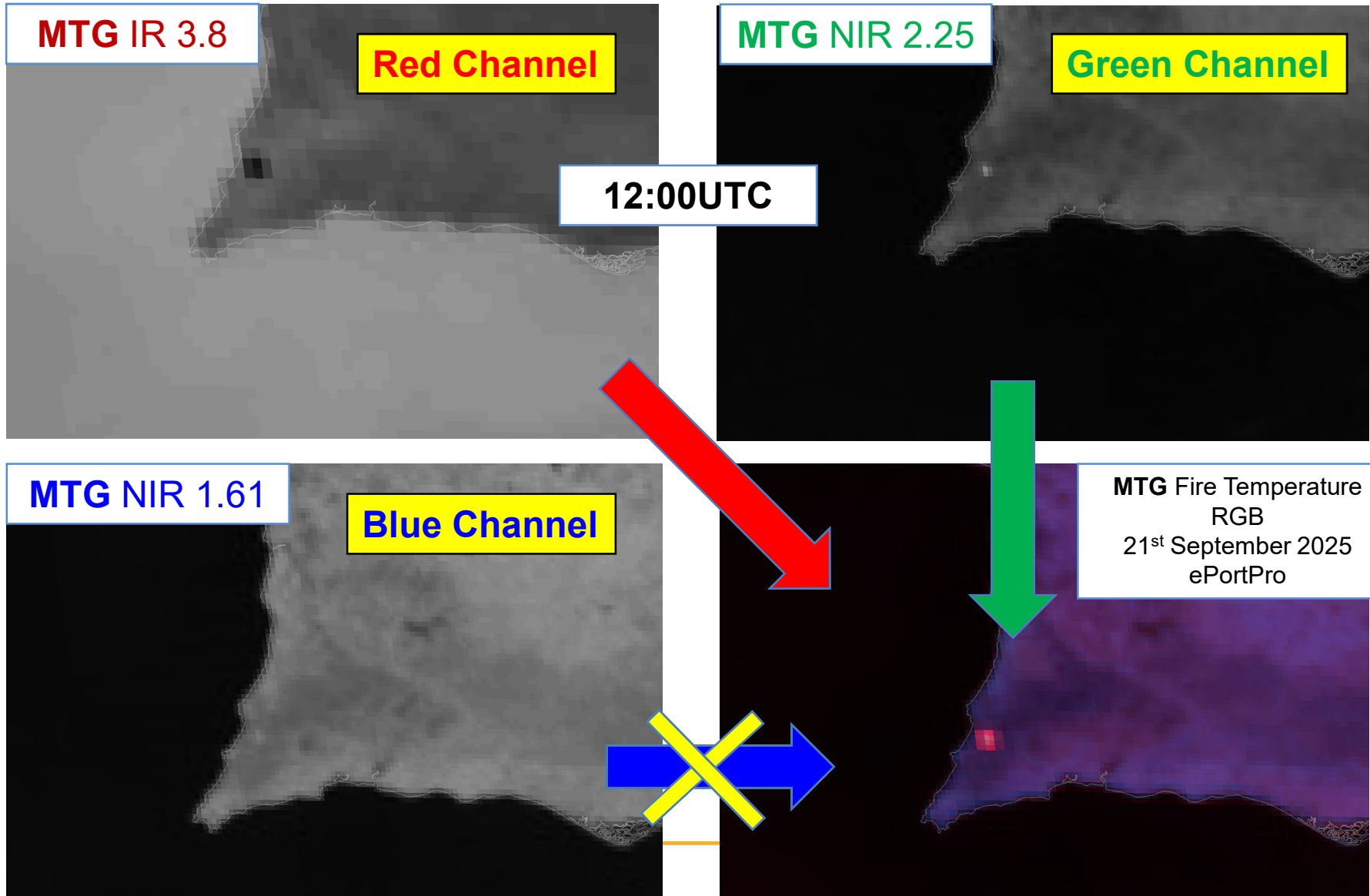
**MTG Fire Temperature RGB**  
21<sup>st</sup> September 2025  
11:10UTC  
[view.eumetsat.int](http://view.eumetsat.int)

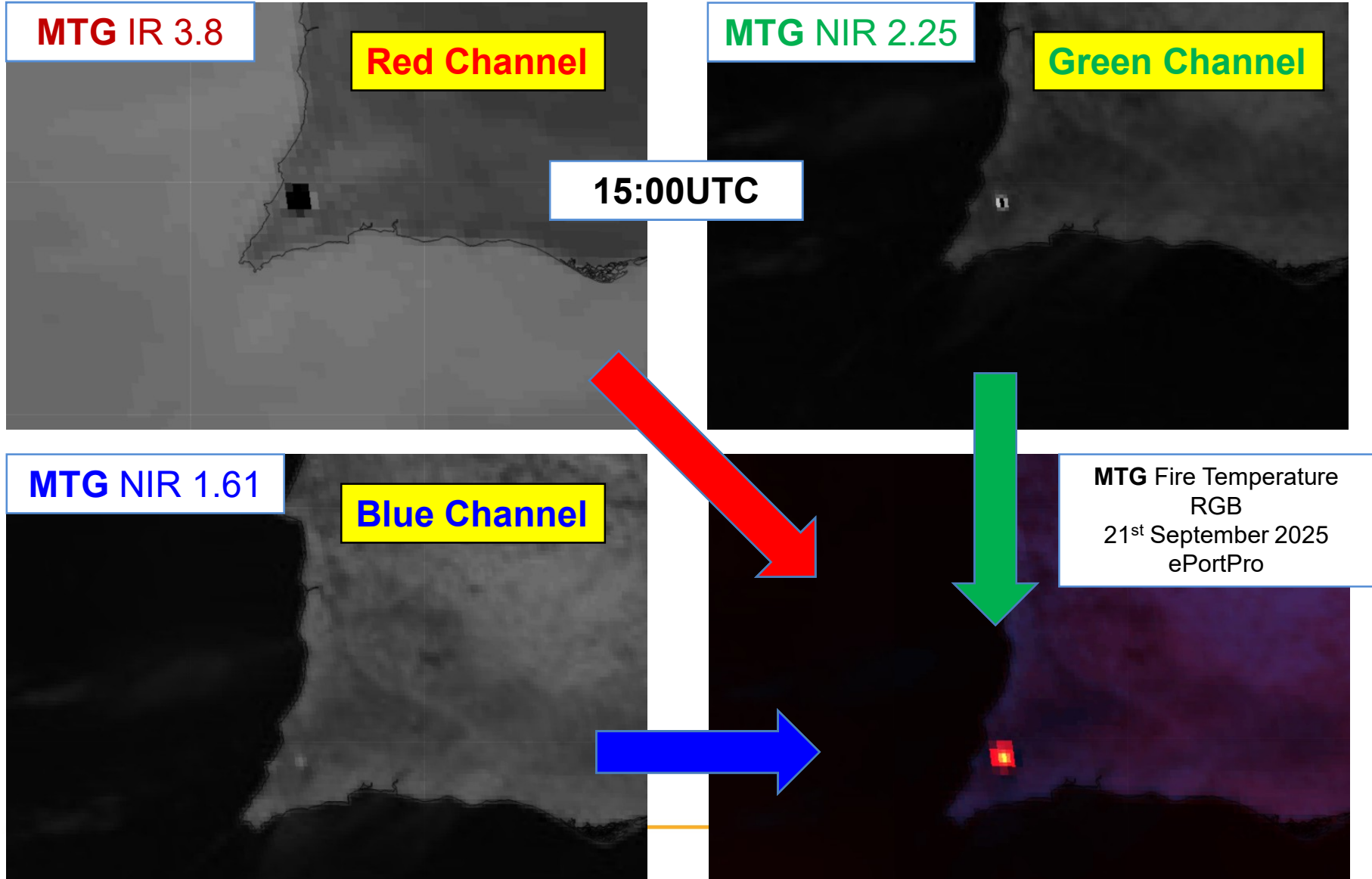
**MTG Fire Temperature RGB**  
21<sup>st</sup> September 2025  
11:20UTC  
[view.eumetsat.int](http://view.eumetsat.int)



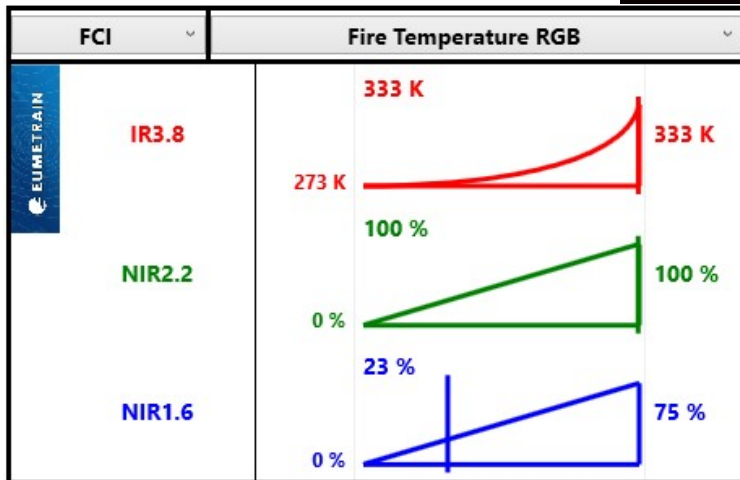
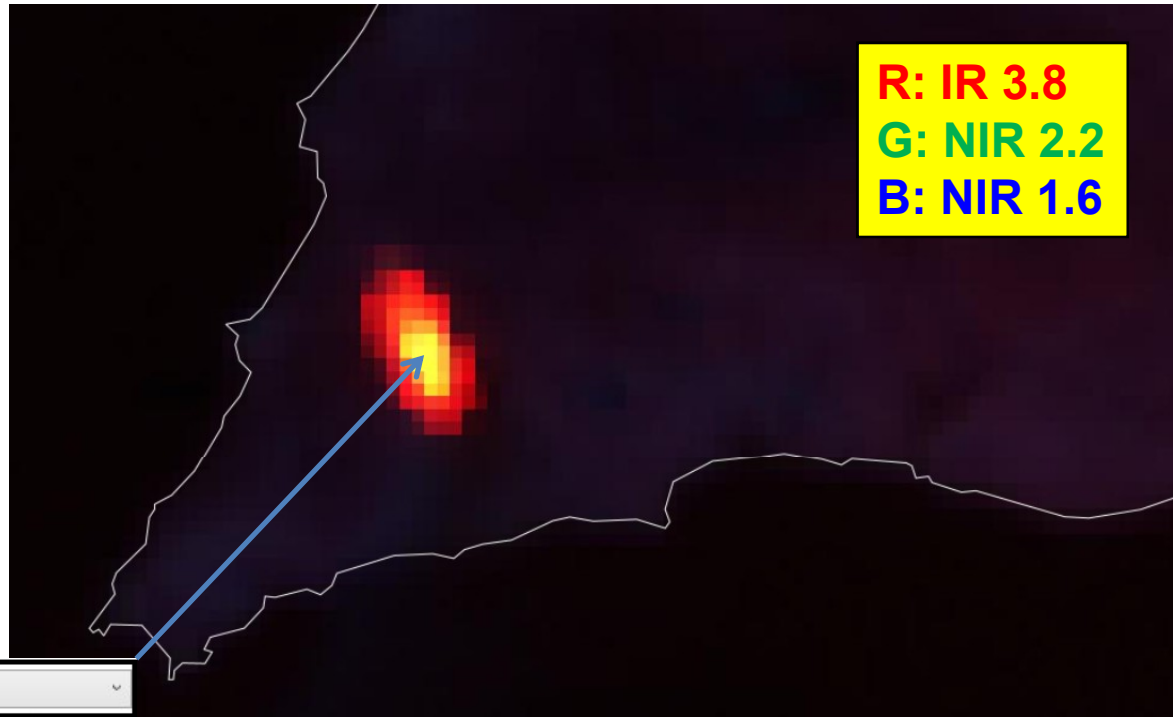
**MSG 3.9** – 3 km resolution,  
Lower saturation Bright. Temp.  
**MTG 3.8** – 1 to 2 km resolution,  
Higher saturation Bright. Temp.,  
narrower spectral range

**MTG Fire Temperature RGB**  
21<sup>st</sup> September 2025  
11:20UTC  
[view.eumetsat.int](http://view.eumetsat.int)





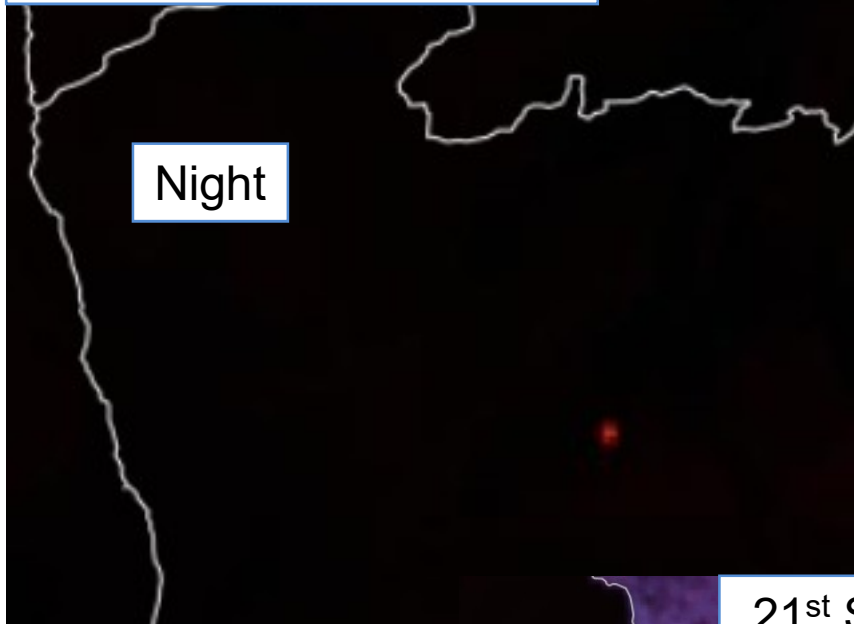
- 1** "Warm" Fire (red)
- 2** "Very Warm" Fire (orange)
- 3** "Hot" Fire (yellow)
- 4** "Very Hot" Fire (near white)



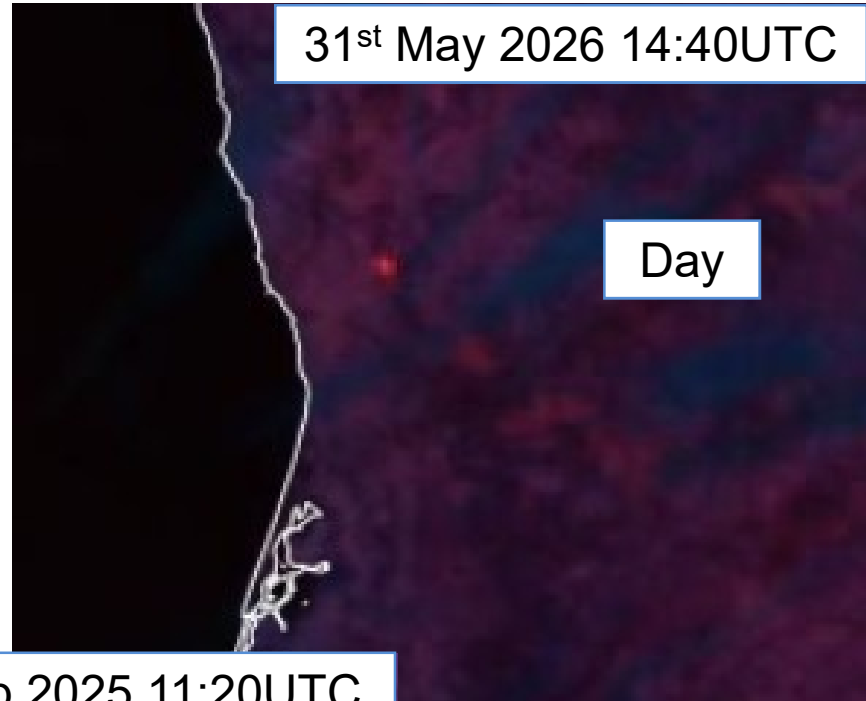
**MTG Fire Temperature RGB**  
 21<sup>st</sup> September 2025  
 16:20UTC  
[view.eumetsat.int](http://view.eumetsat.int)

**MTG Fire Temperature RGB**

29<sup>th</sup> May 2026 23:20UTC



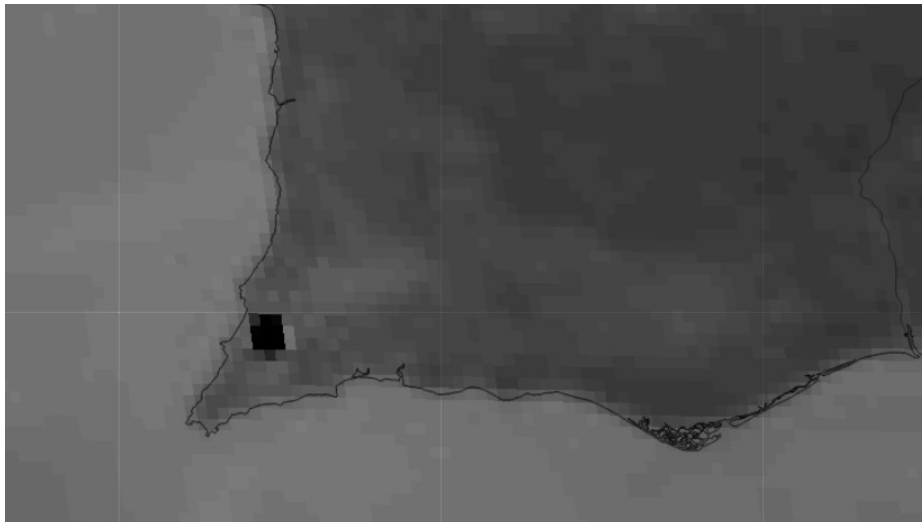
31<sup>st</sup> May 2026 14:40UTC



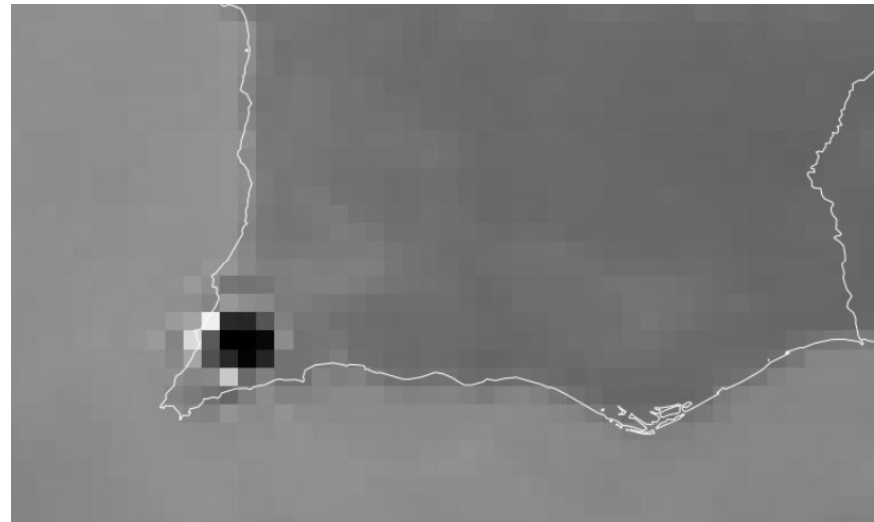
21<sup>st</sup> Sep 2025 11:20UTC  
[view.eumetsat.int](http://view.eumetsat.int)



**MTG IR 3.8 FCI Sensor**  
21<sup>st</sup> Sep 2025 15:00UTC



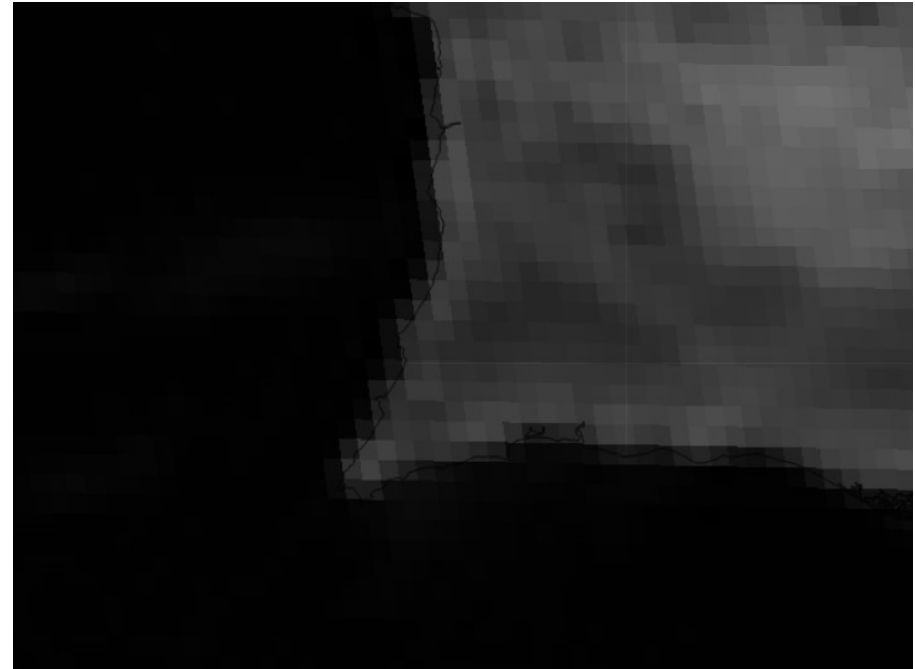
**MSG IR 3.9 SEVIRI Sensor**  
21<sup>st</sup> Sep 2025 16:20UTC

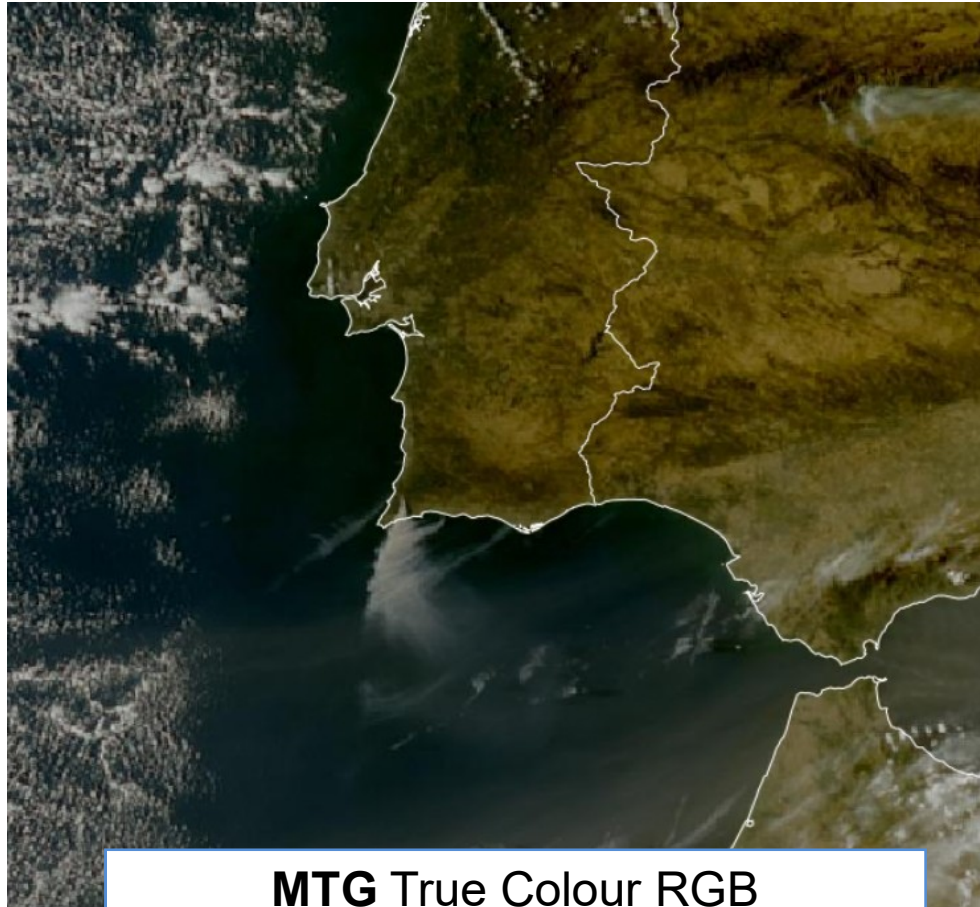


**MTG NIR 1.6 FCI Sensor**  
21<sup>st</sup> Sep 2025 15:00UTC



**MSG NIR 1.6 SEVIRI Sensor**  
21<sup>st</sup> Sep 2025 15:00UTC





**MTG True Colour RGB**  
**21<sup>st</sup> September 2025 16:40UTC**  
view.eumetsat.int

RGB True Colour  
(**MTG-I1** satellite with FCI sensor)

Red Channel: **VIS 0.6**  
Green Channel: **VIS 0.5** (new)  
Blue Channel: **VIS 0.4** (new)

- **10 min** temporal resolution (2.5 min in the near future with MTG-I2)
- 0.5 to **1 km** spatial resolution at nadir
- improved spectral resolution



**MTG True Colour RGB**  
21<sup>st</sup> September 2025  
16:00UTC  
[view.eumetsat.int](http://view.eumetsat.int)

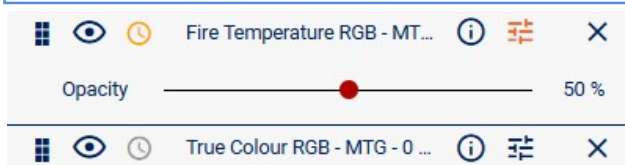
**R: VIS 0.6**  
**G: VIS 0.5**  
**B: VIS 0.4**



**MSG HRV RGB**  
21<sup>st</sup> September 2025  
16:00UTC  
[view.eumetsat.int](http://view.eumetsat.int)

**R: HRV (0.6/0.9)**  
**G: HRV (0.6/0.9)**  
**B: IR 10.8**

**MTG Composition**  
  
 Fire Temperature RGB  
 +  
 True Colour RGB  
  
 21<sup>st</sup> September 2025  
 16:40UTC  
[view.eumetsat.int](http://view.eumetsat.int)



Opacity of 75%:  
 - More detail on the hotspots.  
 - Less detail on the smoke plume.

Opacity of 50%:  
 - Balanced way of combining the best from both RGBs.

Opacity of 25%:  
 - More detail on the smoke plume  
 - Less detail on the hotspots

- 1 "Warm" Fire  
*(red)*
- 2 "Very Warm" Fire  
*(orange)*
- 3 "Hot" Fire  
*(yellow)*
- 4 "Very Hot" Fire  
*(near white)*

**MTG** Composition

Fire Temperature RGB  
+  
True Colour RGB

21<sup>st</sup> September 2025  
16:50UTC  
[view.eumetsat.int](http://view.eumetsat.int)

- 1** "Warm" Fire  
*(red)*
- 2** "Very Warm" Fire  
*(orange)*
- 3** "Hot" Fire  
*(yellow)*
- 4** "Very Hot" Fire  
*(near white)*



