

**EUMETRAIN, 26/11/2015**

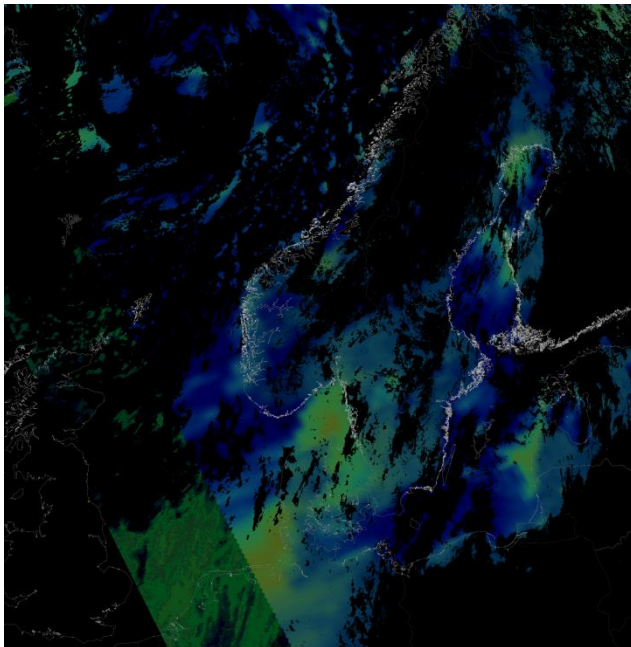
# **Precipitation Products PPS**

## **Anke Thoss, SMHI**



# Outline

- General thoughts on precipitation retrieval
- Precipitating Clouds Product PPS
- The Future: EPS-SG MWI/ICI



NOAA19, 2015-11-25, 06:16 GMT  
Precipitating Clouds product



NORDRAD radar composite 6:00GMT

# Probabilities / Rain rates

Which information do we have available on operational meteorological satellites received at NMS in real time to estimate precipitation?

High spatial resolution **VIS/IR**, including channels carrying microphysical information on cloud top (GEO/LEO). **GEO preferred due to time resolution!**

**LEO before EPS-SG**: MW sounding on relatively high spatial resolution (15km) for high frequency channels (89GHz and 150/157GHz window channels, 183GHz bands for WV sounding). Information content:  
**scattering signature of precipitation size ice particles**

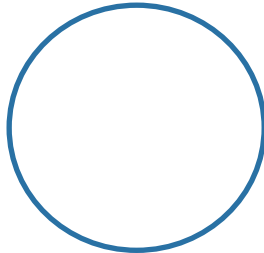


That means only information indirectly related to precipitation especially for cases not involving strong convection!

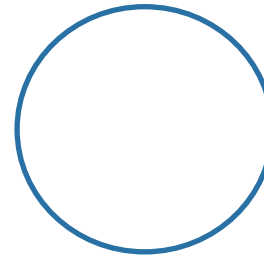
For general instantaneous estimates:  
probabilities or rain rates with large error bars?

## Do you have the NWCSAF PPS package installed?

**yes**



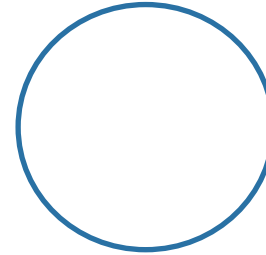
**no**



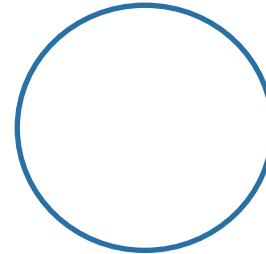
<http://www.nwcsaf.org>

**I am using the following NWCSAF precipitation products:**

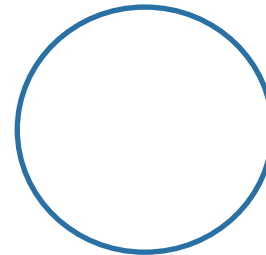
**PPS precipitating clouds product:**



**Any MSG precipitation products:**



**No NWCSAF precipitation products:**



<http://www.nwcsaf.org>

- **Precipitating Cloud product PPS:  
probabilities of precipitation for intensity  
classes**

LEO: Likelihood supplied for classes

- no precip (< 0.1mm/h)
- **Light/chance of precip (0.1mm/h - 0.5mm/h)**
- **Moderate precip (>0.5mm/h – 5mm/h)**
- **Heavy precip (>5mm/h)**

**Application: Nowcasting, especially for  
complementing precipitation overview  
in areas without radar coverage**

## **Precipitating Cloud product PPS:**

**Scientifically the PC algorithm  
has not been changed since PPS v2008 (PC version 1.3)**

Technical adaptations were applied as needed:

- Visualisation and interpolation changes  
when going from area to swath processing
- Updated flags and output format (v2014, PC version 1.6)

**Future:**

**No further algorithm development or adaptation to new satellites.  
Algorithm is likely to be technically maintained  
for MHS onboard NOAA and METOP satellites, if still requested by users**

# NWCSAF PPS Precipitating Clouds algorithm outline

- AMSU-B/MHS estimate of precipitation likelihood based on scattering signature

$$SI = Tb_{89} - Tb_{150} - \text{corrections}(\theta)$$

- For MHS (NOAA18... and METOP) the 157GHZ channel is corrected to simulate 150GHZ behaviour with help of RTM calculations. Correction factor applied: corr (Tb<sub>89</sub>, Tb<sub>183</sub>,  $\theta$ )
- Separate estimates over land and sea, in coastal areas blended estimate according to land/sea fraction
- Likelihood of precipitation estimated in intensity classes is mapped to SI based on histograms of scattering index versus NORDRAD data.
- Using AVHRR and NWCSAF Cloud type product to screen out non-precipitating areas (statistically verified with BALTRAD/NORDRAD data)



# Visualisation:

## Precipitating Clouds:

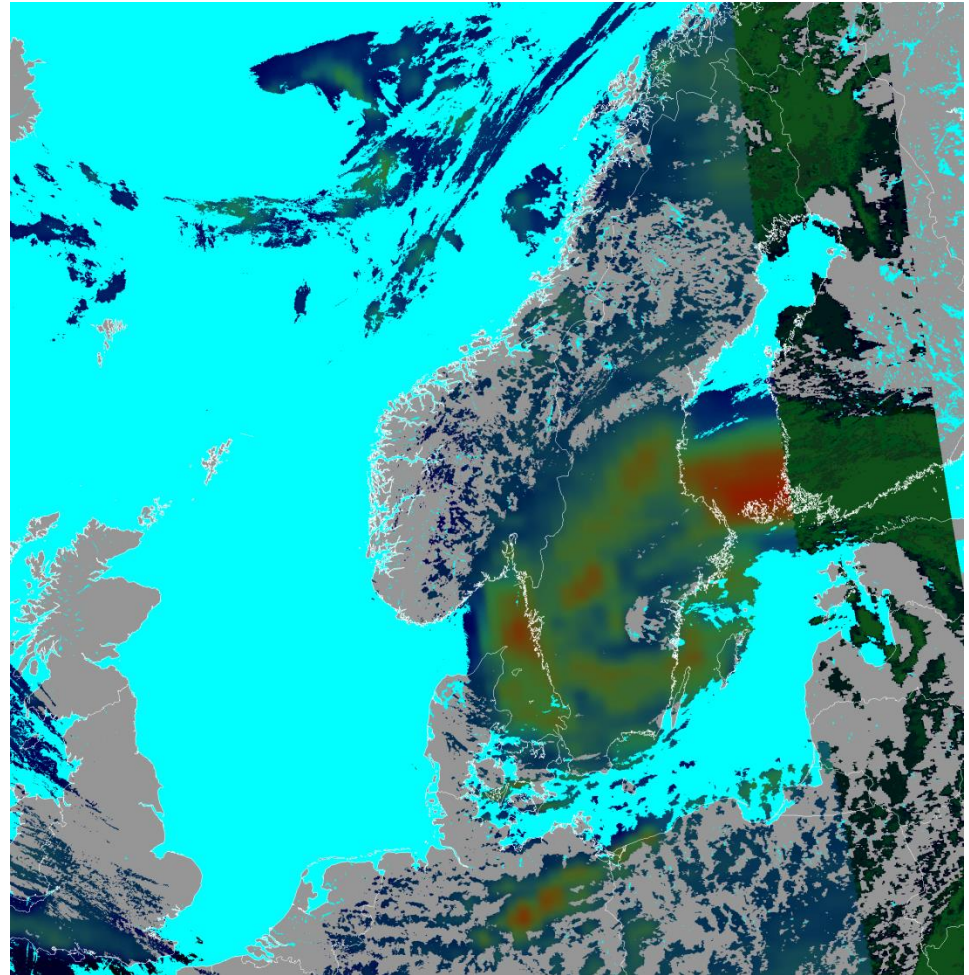
**RGB** of likelihood of instantaneous precipitation in intensity classes

**Red: intensive** ( $\geq 5\text{mm/h}$ )

**Green: light/moderate** ( $0,5 - 5\text{mm/h}$ )

**Blue: risk/very light** ( $0,1-0,5\text{mm/h}$ )

Based on MHS  
and AVHRR ch4&5



NOAA19 2012-06-25, 12:22 UTC

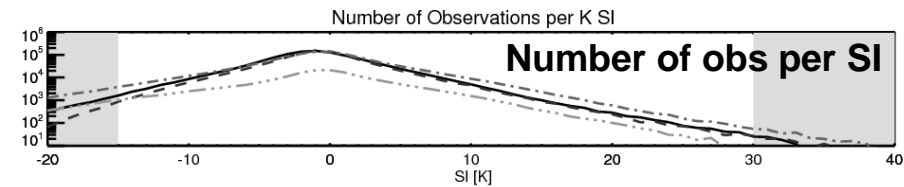
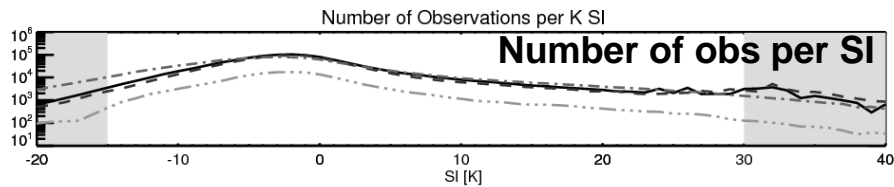
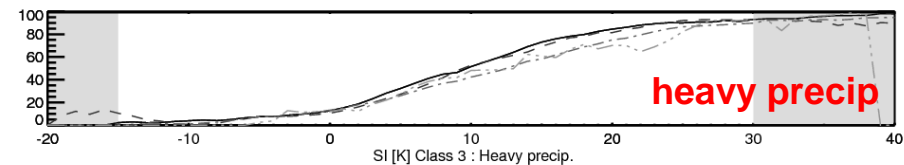
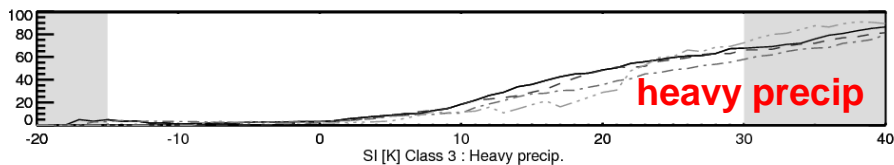
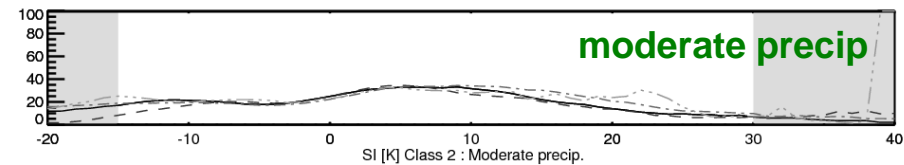
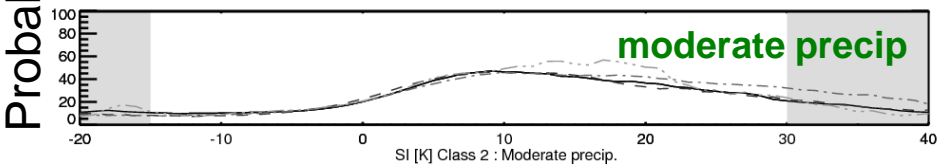
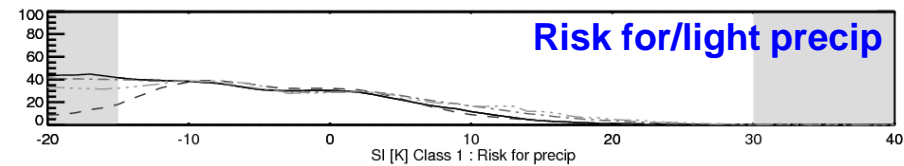
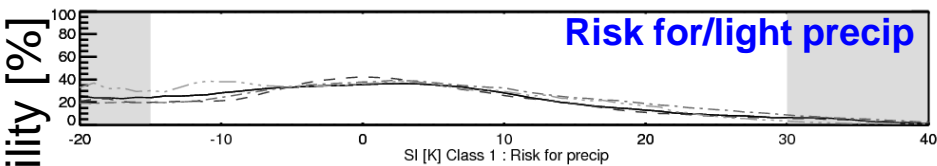
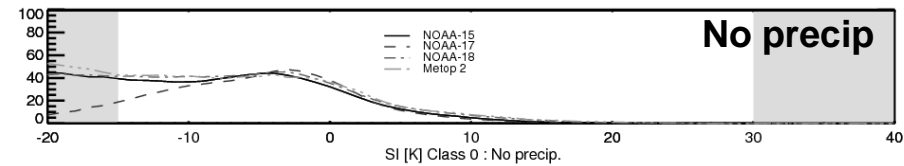
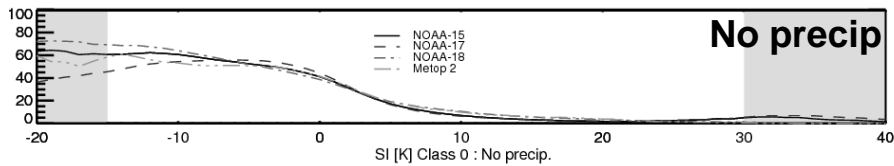
# NWCSAF Precipitating Clouds algorithm mapping of probability to scattering index

**solid line: algorithm**

**dashed and dotted lines: separate satellites. NOAA satellites june 2006-may 2007, metop (dashed) March-May 2007**

**SEA**

**LAND**



SI [K]

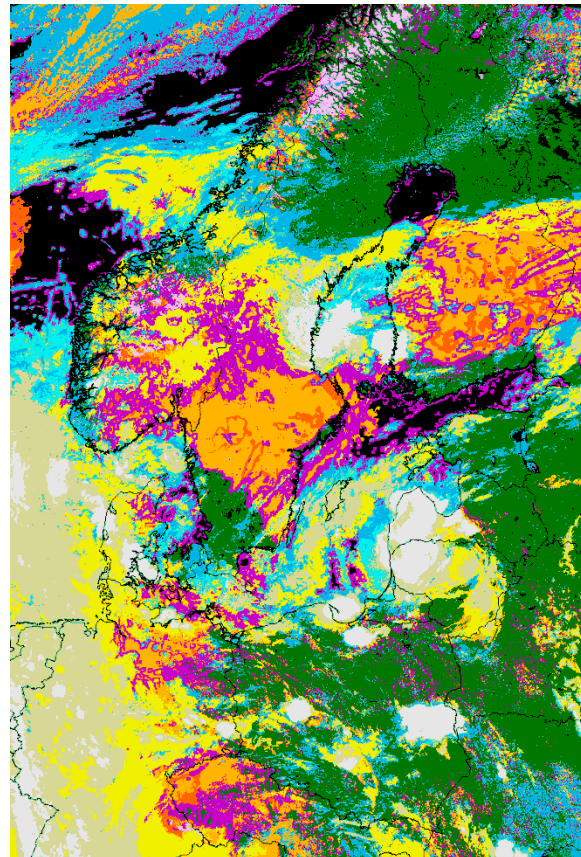
SI [K]

## NWCSAF PPS Precipitating Clouds algorithm

comparison of NWCSAF Cloud type classification (used in filtering of PC product ) with BALTRAD data, statistics over 2 years of data, additionally IR only PC estimate is used to further screen out events with less than 5% precipitatin likelihood

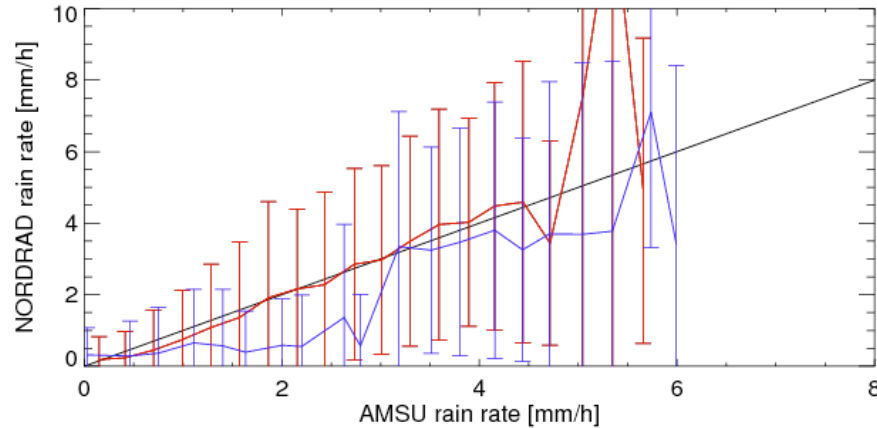
■ Cloud free	0.5%
■ Very low cloud	0.6%
■ Low cloud	2.1%
■ Medium level cloud	9.3%
■ High opaque cloud	19.5%
■ Very high opaque	28.1%
■ Very thin cirrus	2.0%
■ Thin cirrus	1.5%
■ Thick cirrus	5.7%
■ Cirrus over lower clouds	3.2%
■ Fractional clouds	0.9%

*cloud classes treated as potentially precipitating in precipitating cloud algorithm marked green*



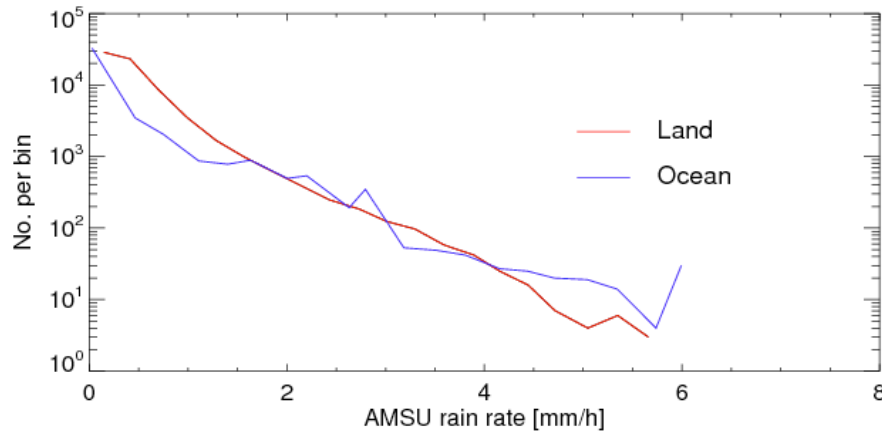
Noaa18 20070529 1116Z

# Precipitation rate from AMSU/MHS



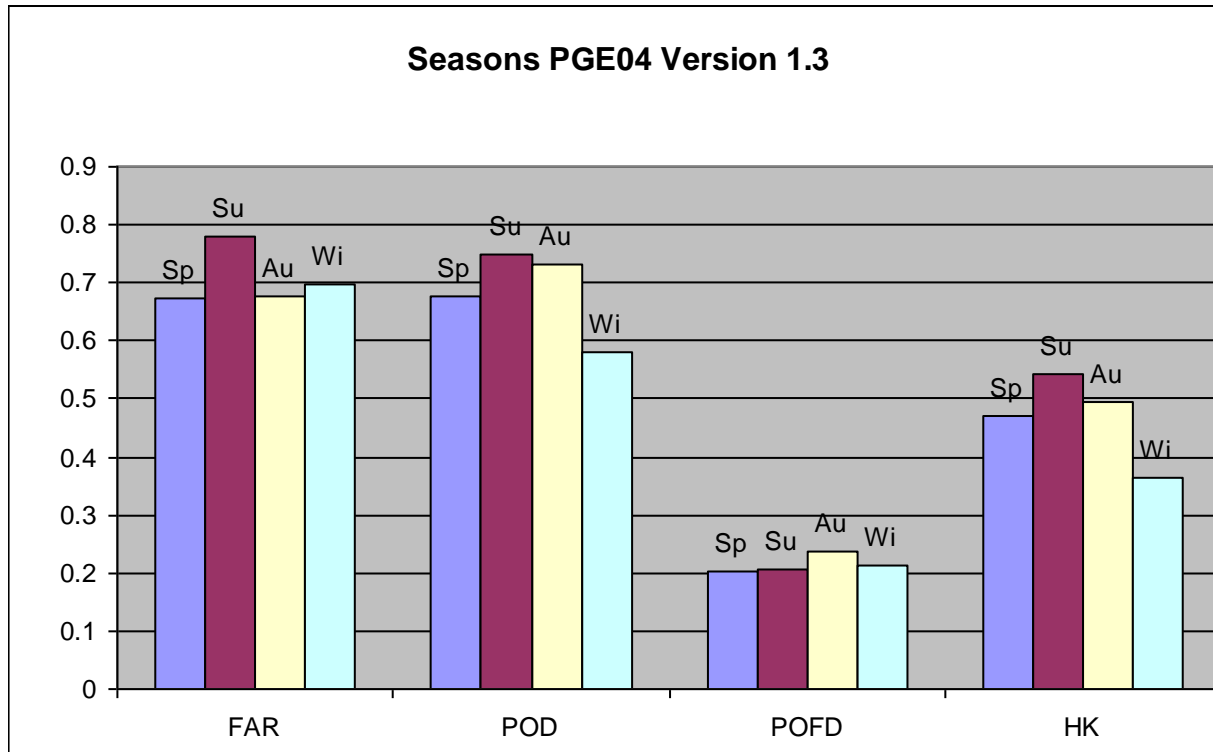
Upper: Rain rate retrieval  
(not implemented)  
based on same dataset  
as likelihood retrieval for  
**Land** and **Ocean**

Comparison against  
NORDRAD data, error bars  
Denote standard deviation  
in intensity bin



Lower: number observations  
per intensity bin

# Validation combined AMSU/IR on different Seasons

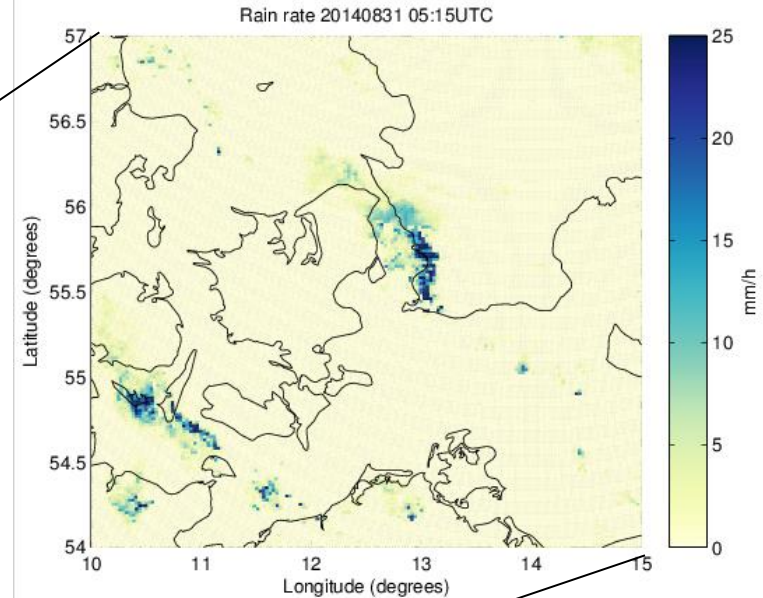
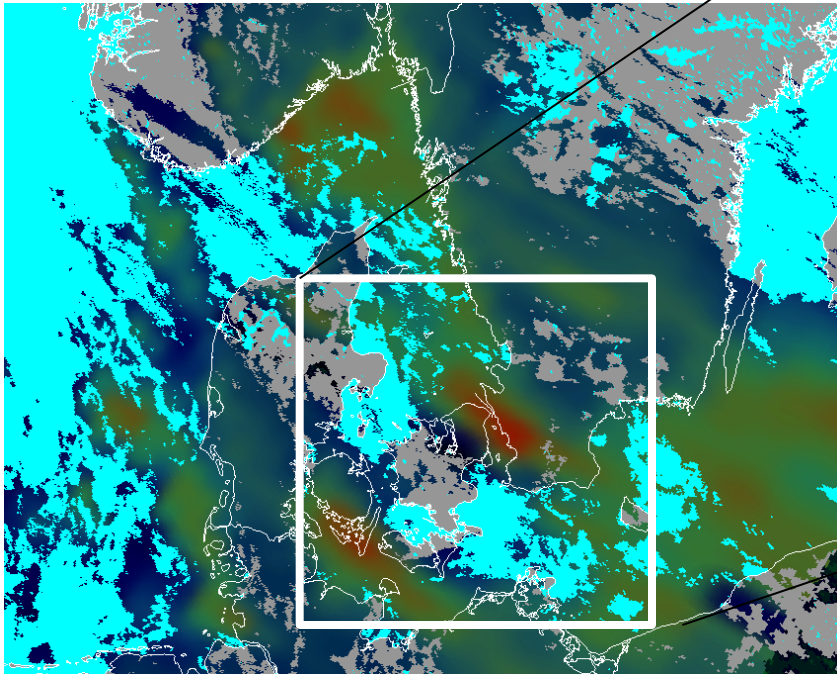


Validation for v2008 for year 2007, algorithm unchanged since than

# "Malmö" storm 2014-08-31

causing severe flooding in Malmö and Copenhagen  
of locally up to 100mm/12h

PC NOAA18 05:12Z



NORDRAD  
05:15

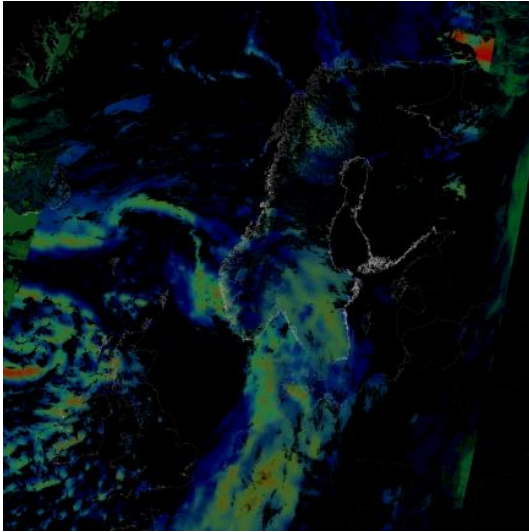
# 2015-02-23

The EUMETSAT  
Network of  
Satellite Application  
Facilities

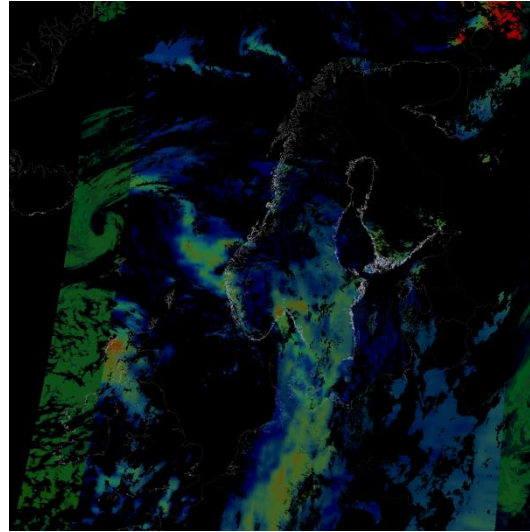
**NWC SAF**  
Support to Nowcasting and  
Very Short Range Forecasting

# SMHI

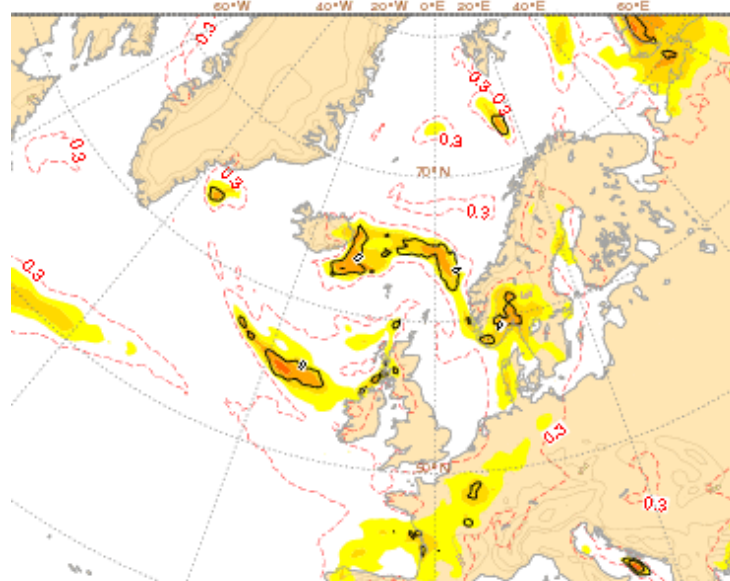
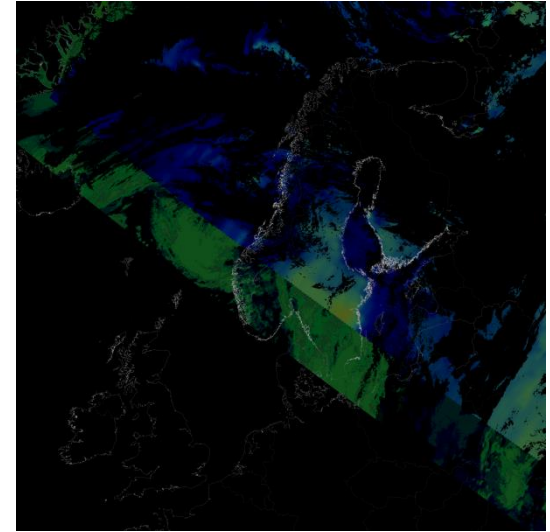
PC NOAA18 05:18Z



PC METOP1 09:30Z

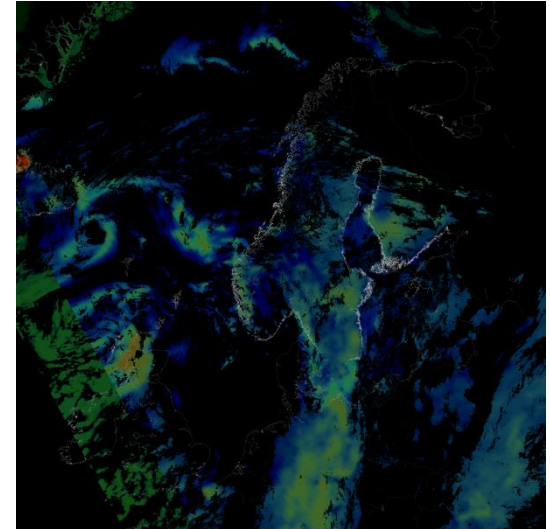


PC NOAA19 10:27Z



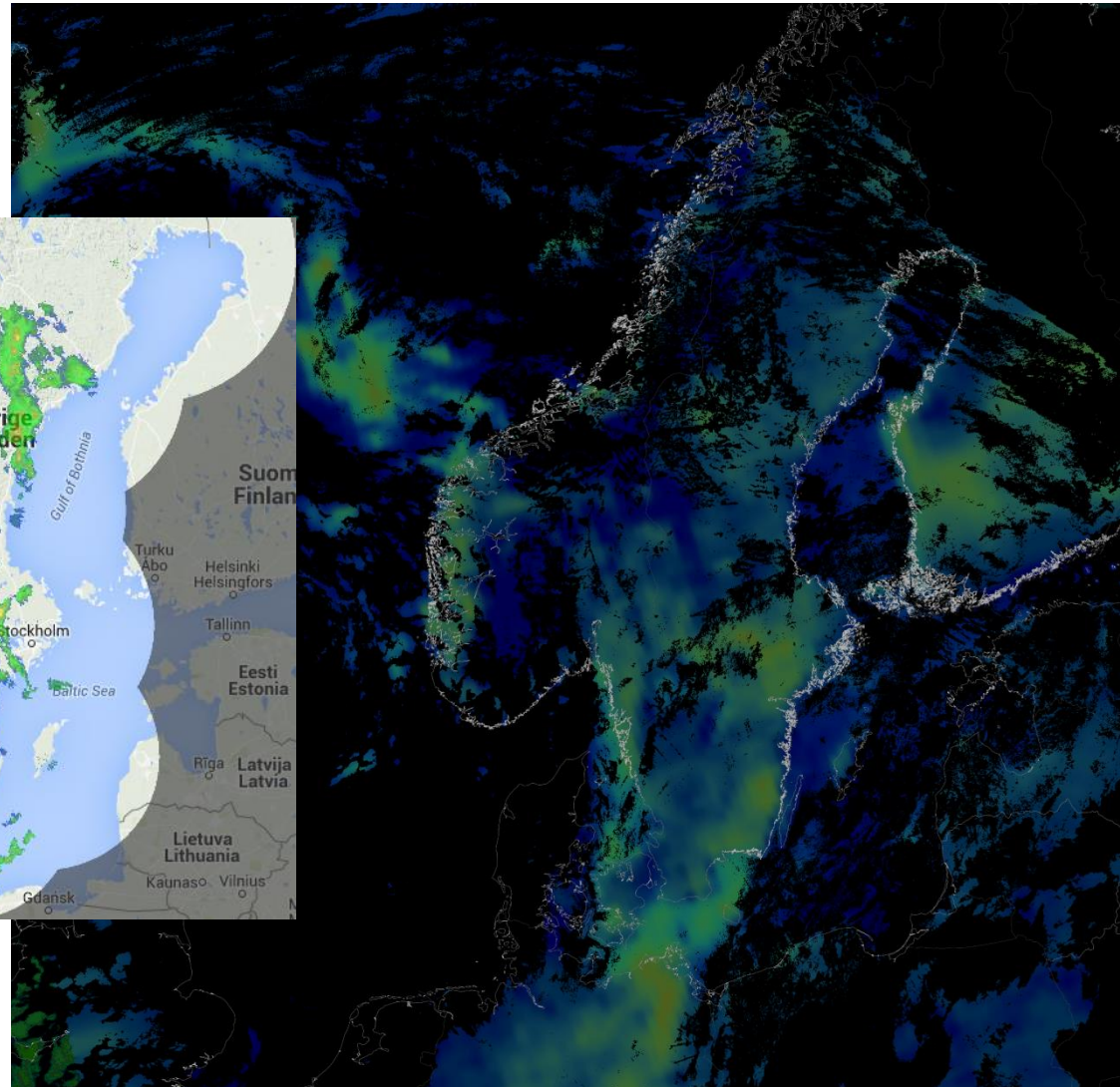
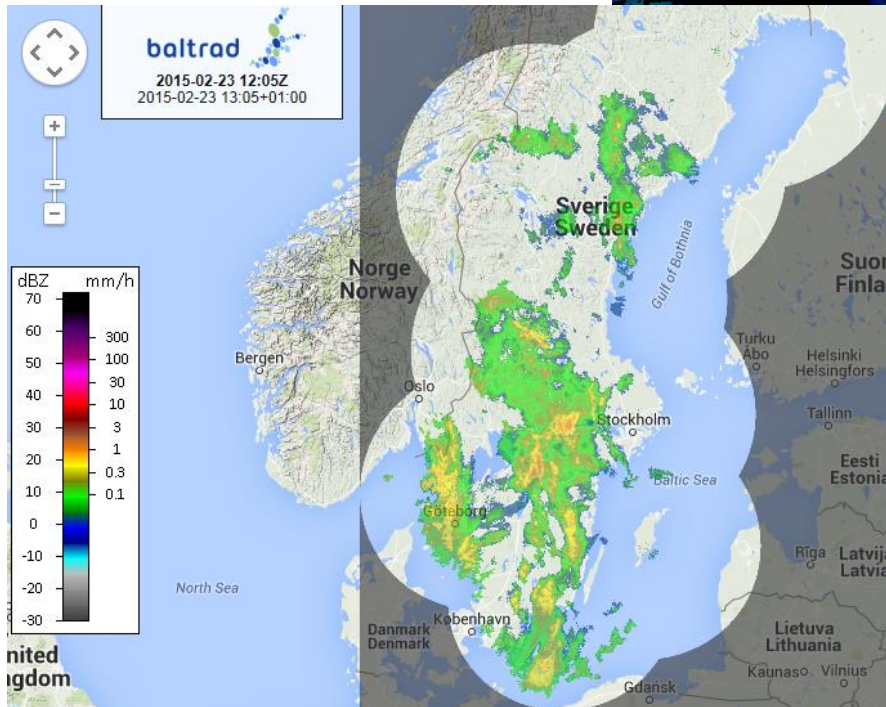
**ECMWF  
Extreme Forecast  
Index  
local precipitation,  
2015-02-23 00Z –  
2015-02-24 00Z**

PC NOAA19 12:06Z



# PC product and BALTRAD radar composite

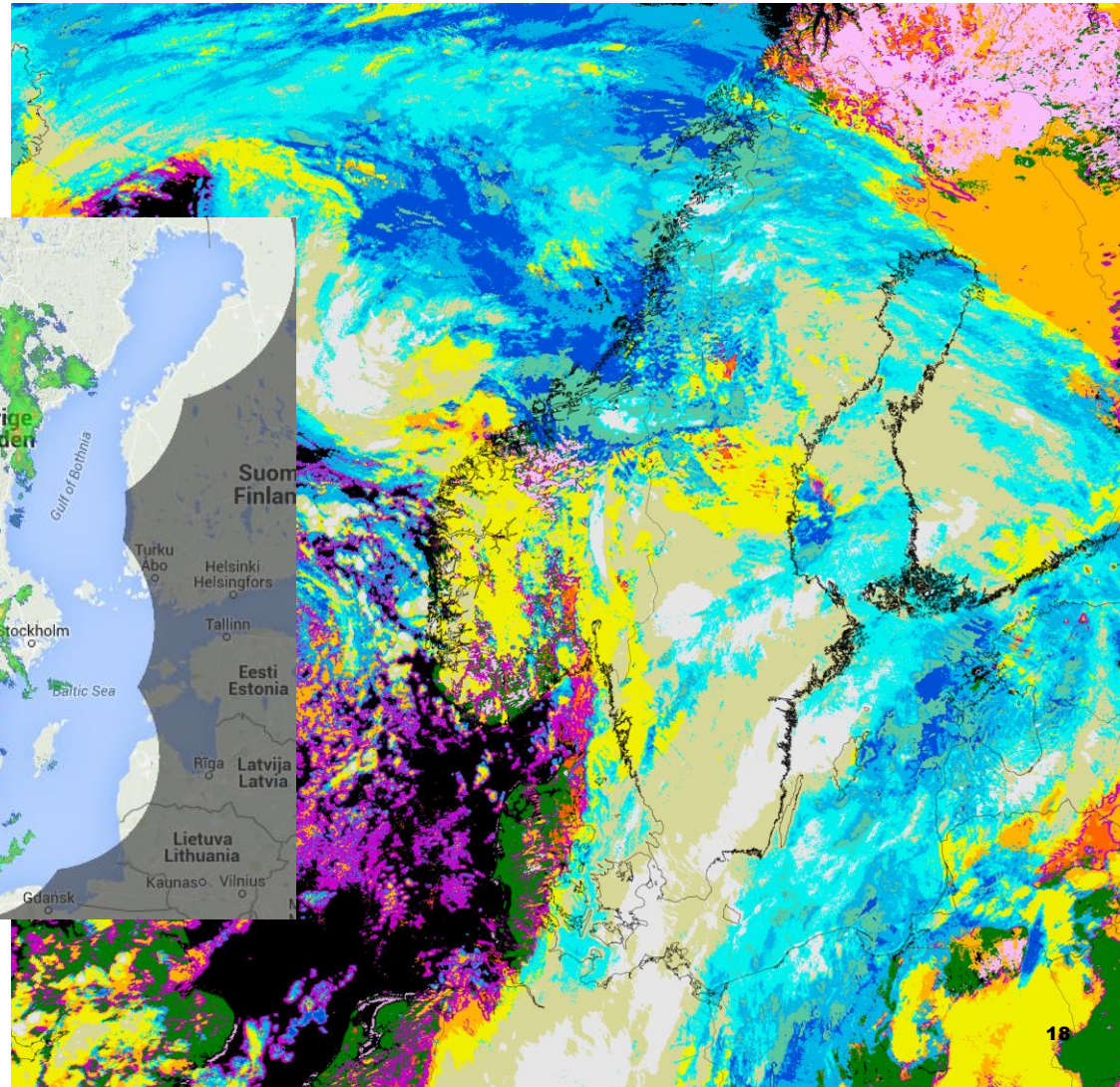
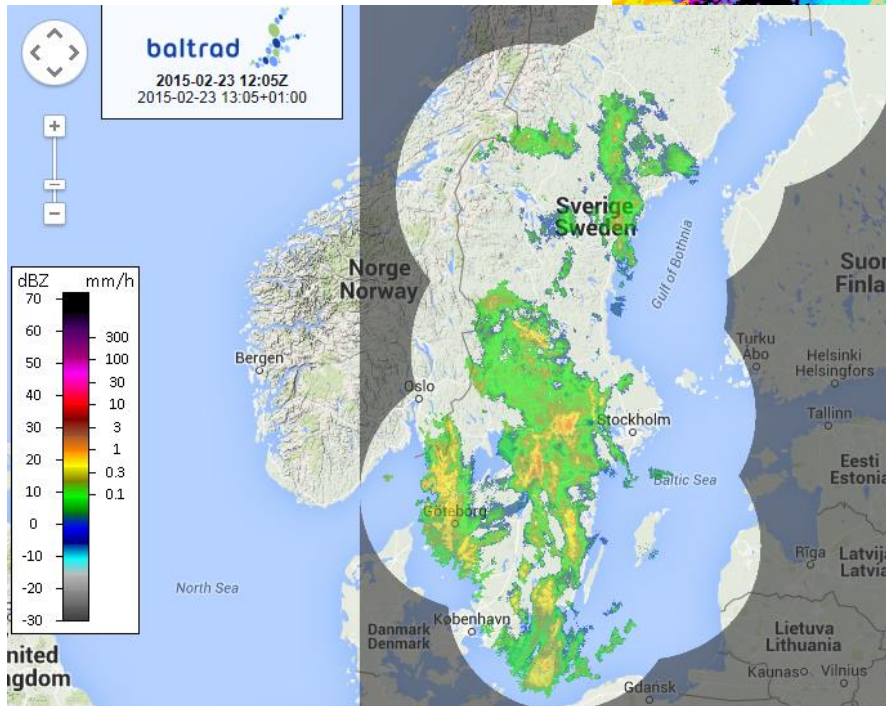
2015-02-23 12:05Z





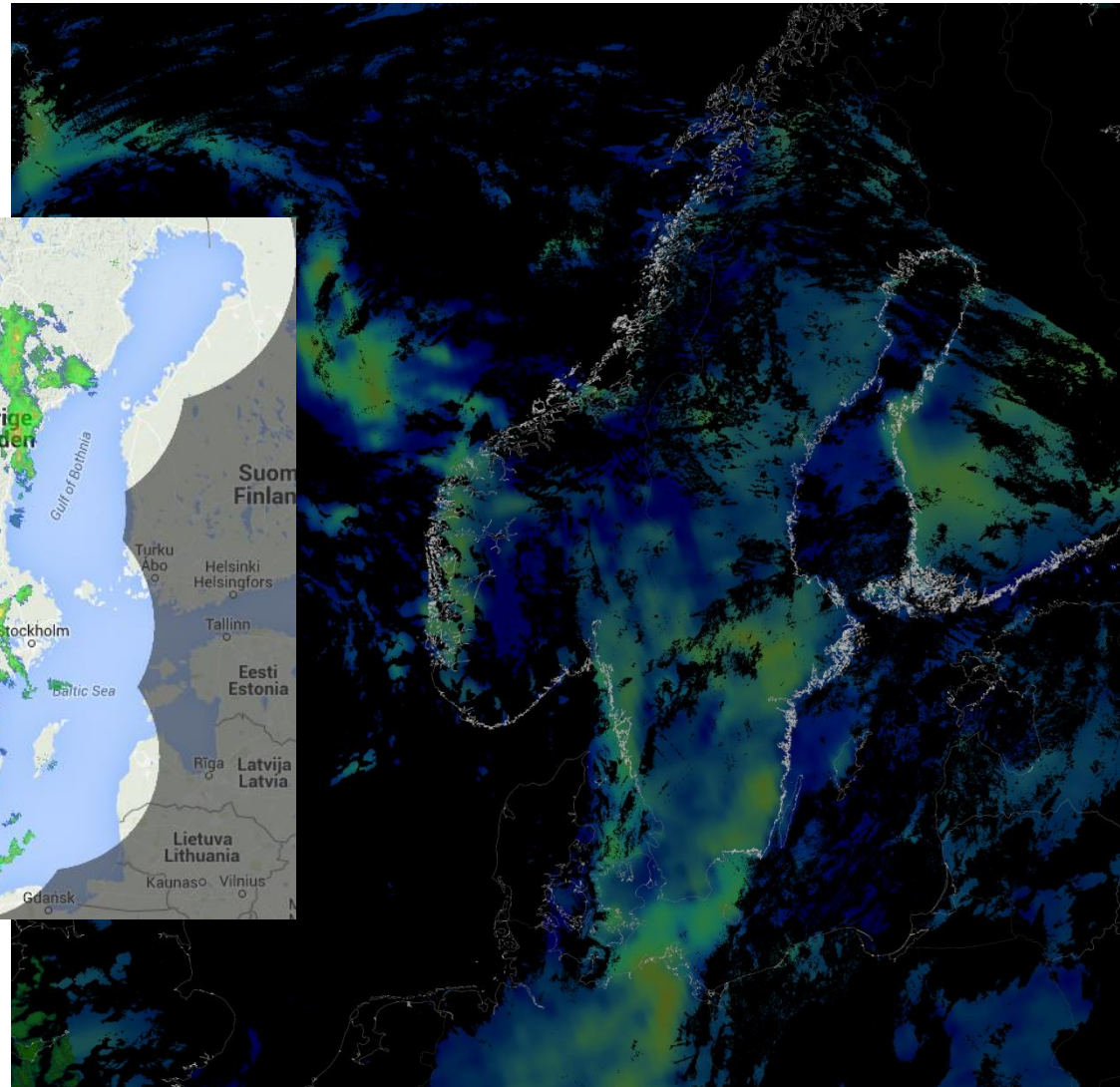
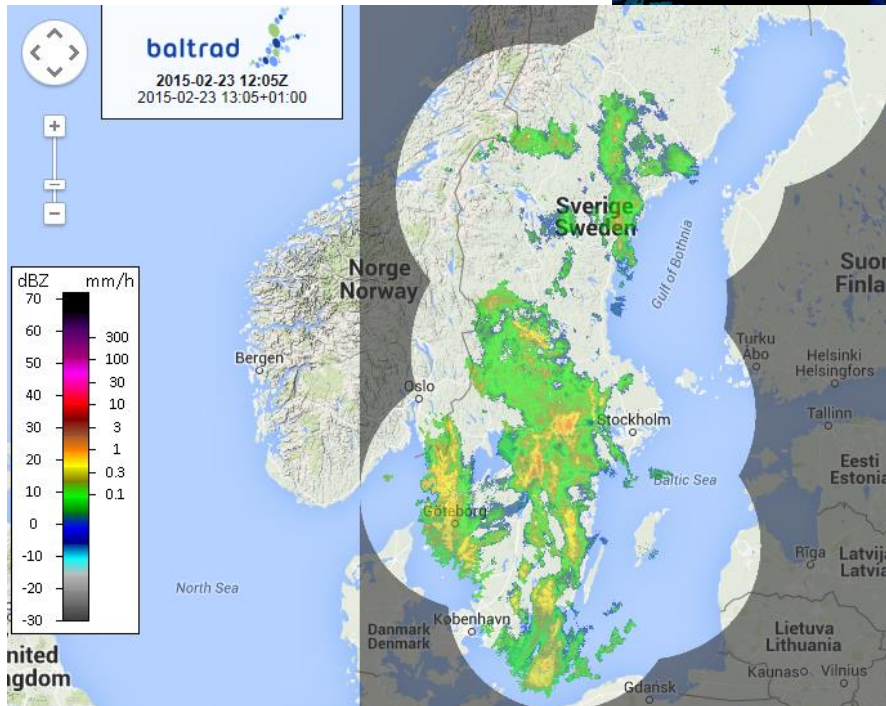
# PC product and BALTRAD radar composite

2015-02-23 12:05Z



# PC product and BALTRAD radar composite

2015-02-23 12:05Z



# **The Future: METOP-SG-B1 (launch 2022)**

- **MWI: MW imager**
- **ICI: submillimeter imager with high sensitivity to cloud ice**
- **In collaboration with Chalmers Technical University, NWCSAF is developing a day-1 Ice Water Path (IWP) retrieval from ICI to be implemented in EUMETS AT Ground Segment and in PPS**
- **We would like to take advantage of precipitation algorithm development at HSAF and CMSAF, and implement an (TBD) MWI precipitation retrieval in the PPS software for nowcasting purposes**
- **We would also like to make available the CMSAF MWI LWP retrieval in PPS**
- **We would like to collaborate on combined MWI/ICI precipitation and snowfall retrievals (CDOP4)**
- **Implementations foreseen in 2023 or 2024 (CDOP4)**

---

# Thank you for listening!

## Any questions?